

# 2004 ANNUAL REPORT



## MISSION STATEMENT:

The mission of Kids' Chance of Pennsylvania, Inc. (Kids' Chance of PA) is to provide financial support for post-secondary education, through scholarship grants, to children of Pennsylvania workers who have been killed or seriously injured in a work-related accident resulting in financial need. Kids' Chance of PA was founded as a non-profit 501(c)(3) organization in 1997. Since its inception, Kids' Chance of PA has awarded scholarships to over 230 deserving student applicants throughout Pennsylvania.

## A LETTER FROM OUR BOARD PRESIDENT:

Dear Kids' Chance Supporters and Friends:

I am happy to report that for the second year in a row, Kids' Chance increased the dollar amount in total scholarships. We provided a total of \$58,000 in scholarship grants to 35 deserving college-bound students. Higher grants were made possible by the generous second year grant of the ACE INA Foundation and were awarded to applicants demonstrating both high academic potential/performance and significant financial need. What is more outstanding is the fact that the scholarships provided last year helped us raise another \$26,555 through a state matching program called PATH (Partnership for Access to Higher Education). The ACE INA Foundation has already committed to increasing the past year's contribution to \$30,000.

We also broadened our base of support last year through the Corporate and Community Partner program. Currently there are 26 Partners representing a variety of organizations related to the workers' compensation field. Partner commitments from organizations such as the Pennsylvania Self-Insurers' Association, as well as golf outings benefiting Kids' Chance hosted by the Central Pennsylvania Chapter of RIMS and Onyshko Investigative Services, were also vital to our success.

The Kids' Chance Board has been working diligently to update our strategic plan. I am pleased to report that during our November 2005 Board Meeting, the plan was adopted.

Support from a wide range of workers' compensation related businesses and groups, as well as private individuals, have made these opportunities possible for Kids' Chance scholarship recipients. To our donors, and on behalf of the students whose lives have been positively impacted, thank you. We have posted letters from scholarship recipients on our website, and I encourage you to read some of these letters as they reflect, in the students' own words, the difference Kids' Chance is making.

We are currently working with the Bureau of Workers' Compensation to hold our first ever recognition banquet in conjunction with their two day conference which is tentatively scheduled in Hershey in June 2006. This is a great opportunity to have our scholarship recipients meet our corporate sponsors. We have also asked our Honorary Chair, Governor Edward Rendell, to speak at this Banquet.

I look forward to working with concerned organizations and individuals across the state to fulfill the Kids' Chance mission in 2005 and beyond. Together we can continue to make life-changing opportunities possible.

A handwritten signature in black ink, reading "Jeffrey S. Gelburd".

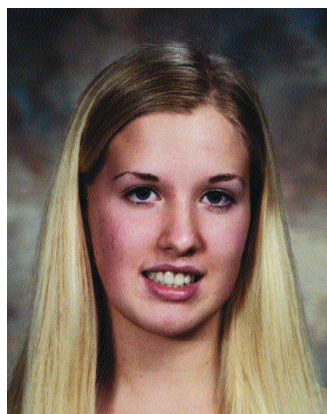
Sincerely,

Jeffrey S. Gelburd  
President

# KIDS' CHANCE OF PA SCHOLARSHIPS, 2004-2005



Jessica Hammond  
Lock Haven University



Elizabeth Wagner  
Boston University

*"This scholarship really has opened up a world of opportunity for me. With the financial assistance of this scholarship, I was able to accept and attend my first-choice college, and pursue my interest in international relations/foreign languages. I am honored to have this opportunity to pursue my academic dreams."*

## SCHOLARSHIP HIGHLIGHTS:

Kids' Chance scholarship grant recipients came from all over the state of Pennsylvania. All have a parent who has been seriously injured or killed in a work-related accident. Criminal Justice; Elementary Education; Computer Science; Architectural Engineering; English/Secondary Education; Engineering; and International Relations/Foreign Languages.

- The total dollar amount of scholarship grants awarded increased from the previous year.
- Through a Partnership with the PATH Program of the Pennsylvania Higher Education Assistance Agency (PHEAA) and American Education Services (AES), Kids' Chance of PA leveraged an additional \$26,555 in matching grants for 20 Kids' Chance scholarship recipients with remaining unmet financial need.
- 60% of scholarship recipients also received a Kids' Chance grant the previous year. (Students must re-apply annually and must satisfy the eligibility requirements each year to be considered for a grant.)

*"Thank you so much for your generous scholarship to my student education. It's your organization with its selfless deeds that gives kids like me a chance for a prominent future. You've given me the inspiration to succeed both at school and life."*

## 3-YEAR SCHOLARSHIP OVERVIEW:

Academic Year	# Grants Awarded	Average Amount	Total
2002-2003	27	\$900	\$24,500
2003-2004	35	\$1,500	\$53,000
2004-2005	35	\$1,500	\$58,000

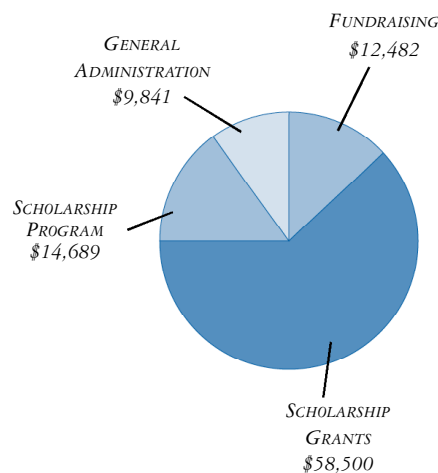
# KIDS' CHANCE OF PA SCHOLARSHIP RECIPIENTS, 2004-2005

Recipient	Hometown	College/University/Technical School
Erica Anthony	Washington	California University of PA
Joshua Barnish	Eldred	California University of PA
Heather Brannan	Harmony	Slippery Rock University
Walter Chesla	Shenandoah Heights	Muhlenberg College
Dominique D'Angelo*	McDonald	California College of the Arts
Daniel DeGrazia	Carbondale	Dickinson College
Alicia Demer	Susquehanna	Wilkes University
Brandon Dieffenbach	Robeson	Juniata College
Mandy Dieffenbach	Robeson	York Technical Institute
Catherine Donnelly	Philadelphia	LaSalle University
Kevin Gorman	Mechanicsburg	Alvernia College
Patrick Gorman	Mechanicsburg	Shippensburg University
Lynnsey Grzybowski	Philadelphia	Marist College
Jessica Hammond*	Williamsburg	Lock Haven University
Roy Herr	Waupum	Youngstown University
Shane Hesser	Middletown	Mansfield University
Brandon Kear	Greensburg	Penn State Univ/Altoona
Kevin Kear	Greensburg	W. Virginia Wesleyan College
Kyle Kenthack	Paupack	Lycoming College
Joseph Kringer	McAdoo	East Stroudsburg University
Garrett Kurtek	Pottsville	Bloomsburg University
Melissa Mackrella	Moon Township	LaRoche College
Andrea McClellan	York	Slippery Rock University
Steven McClullough	Philadelphia	Pace University
Shannon Muirhead	Dubois	Penn State Univ/Univ Park
Sherri Muirhead	Dubois	Slippery Rock University
Chelsey Padasak	Johnsonburg	Indiana University of PA
Kyle Riffle	Sharon	Youngstown University
Harry Sankey	Warminster	Widener University
Courtney Sones	Danville	Penn State Univ/Univ Park
Sarah Speakman*	Bulger	University of Pittsburgh
Shannon Speakman*	Bulger	University of Pittsburgh
Jamie Streicher	State College	Penn State Univ/Univ Park
Ashley Trabosh	Lenhartsville	Kutztown University
Elizabeth Wagner*	Philadelphia	Boston University
Rachel Wisner	West Easton	Northampton Community College

\* Kids' Chance ACE INA Scholar

## FINANCIAL OVERVIEW FISCAL YEAR 2003 & 2004

	Twelve Months Ended	
	Dec. 31, 2003	Dec. 31, 2004
Ordinary Income Expense		
Income		
Interest Income	\$ 269	\$ 443
General Unrestricted	1,500	858
ACE INA Scholarship	25,000	25,000
Scholarship Donations	20,877	40,292
Partnerships	46,250	53,500
Total Income	\$ 94,166	\$120,093
Expense		
Scholarship Grants	\$ 53,000	\$ 58,500
Scholarship Program	17,865	14,869
General Administration	8,935	9,481
Fundraising	18,560	12,482
Total Expenses	\$ 98,360	\$ 95,152



### Notes:

- \* Scholarship grants and related expenses comprise 72% of total expense.
- \* Materials and website-related expenses included within scholarship program and fundraising totals were higher than initially estimated due to one-time development related costs.
- \* Income does not include over \$13,000 in Partner and scholarship funds pledged in Fall 2003 but not received until early 2004.



## CORPORATE AND COMMUNITY PARTNER PROGRAM

The Corporate and Community Partner Program supports the operational activities of Kids' Chance including raising scholarship funds, administering scholarship applications, preparing and printing communications and publications, updating the website, etc. In 2004, Kids' Chance of PA secured 26 partnerships, including several multi-year pledges.

### SENIOR (\$10,000)

Pennsylvania Self-Insurers' Association (PSIA)

### JUNIOR (\$5,000)

Central PA Chapter, Risk & Insurance Management Society  
Eastern Alliance Insurance Group/Employers Alliance  
Pennsylvania Bar Association

### SOPHOMORE (\$2,500)

Alliance Impairment Management, Inc.

Marsh & McLennan Companies

MedRisk, Inc.

Peters & Wasilefski

### FRESHMAN (\$1,000)

Allegheny County Bar Association  
Caroselli, Beachler, McTiernan & Conboy, LLC  
CNA Foundation  
Dickie, McCamey & Chilcote  
Fried, Kane, Walters, Zuschlag & Grochmal  
Genex Services, Inc.  
Injured Workers Pharmacy

Katheman Briggs & Greenberg LLP

Kegel Kelin Almy & Grimm LLP

Martin, Banks, Pond & Lehocky

Murray Insurance Associates, Inc.

Pennsylvania AFL-CIO

Quatrini Rafferty Galloway, PC.

Saltz, Mongeluzzi, Barrett and Bendensky P.C.

Sedgwick Claims Management Services, Inc.

The PMA Insurance Group

Thomas, Thomas & Hafer, LLP

Westfield Insurance

## KIDS' CHANCE OF PA. BOARD OF DIRECTORS

### HONORARY CHAIRMAN

Honorable Edward G. Rendell  
Governor of Pennsylvania

### PRESIDENT

Jeffrey S. Gelburd  
Marsh USA, Inc.

### VICE PRESIDENT

P. Drew Jones  
The PMA Insurance Group

### SECRETARY

Anthony J. Bilotti  
Anthony J. Bilotti & Associates, LLC

### TREASURER

Kim J. Jones  
Murray Insurance Associates

Edward Case, Jr.

Byerly, Inc.

A. Jeffrey Cramp

Cramp and Associates

Gary T. DeFlorentis

PSBA Insurance Trust

Bart E. Ecker

Laputka, Bayless, Ecker & Cohn

Suzanne M. Emmet, CPCU

Eastern Alliance Insurance Group

Pearre Dean

Pennsylvania AFL-CIO

William Lynch, Esq.

Thomas Lowry and Associates

David Manley

Mellon Certified Restoration

Don McCarter

NovaCare Rehabilitation

John McTiernan, Esq.

Caroselli, Beachler, McTiernan  
and Conboy, LLP

Mike Ness

Vocational Rehabilitation Services, Inc.

Bart Shaffer

Weis Markets

P.O. Box 543  
Pottstown, PA 19464

INSERT  
POSTAL  
INDICIA  
HERE



To make a tax-deductible donation to support Kids' Chance scholarships,  
please see our brochure or newsletter, or visit our website: [www.kidschanceofpa.org](http://www.kidschanceofpa.org).  
For more information about the Partner Program and benefits, please call (484) 945-2104.